

Information Services

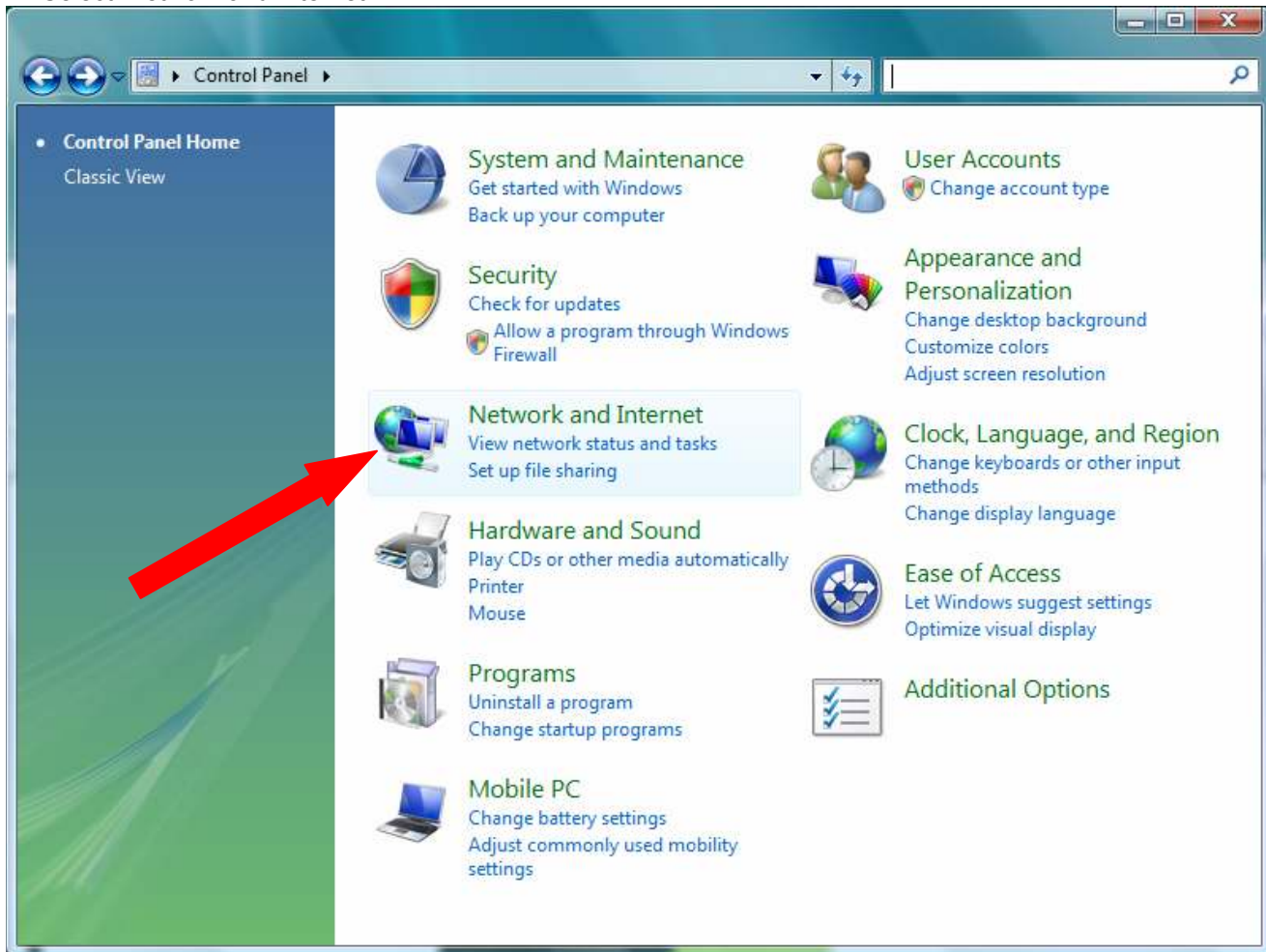
TUSecure Wireless Setup Guide

For Windows Vista

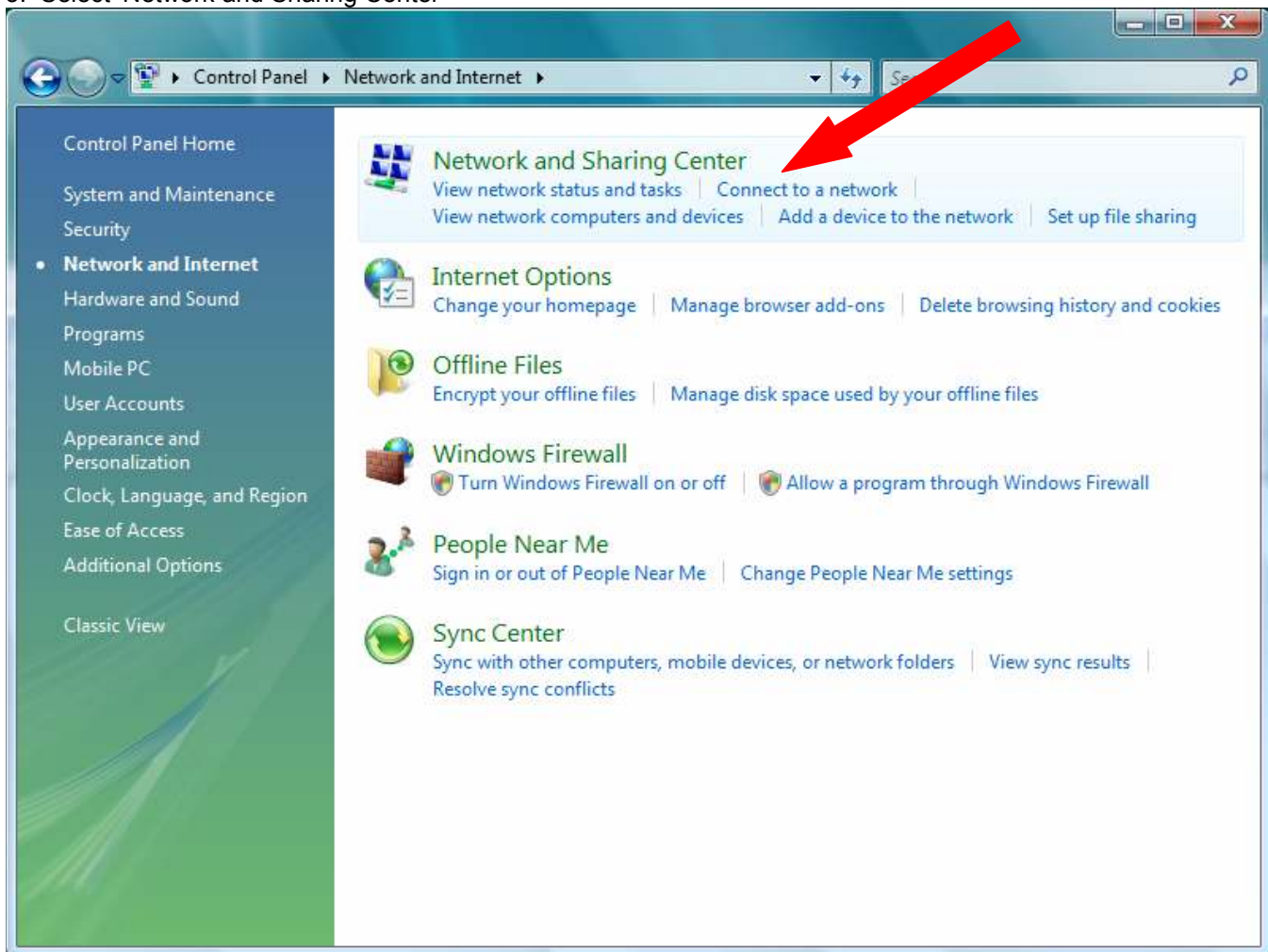
1. Click on the 'Start' Menu, and select Control Panel



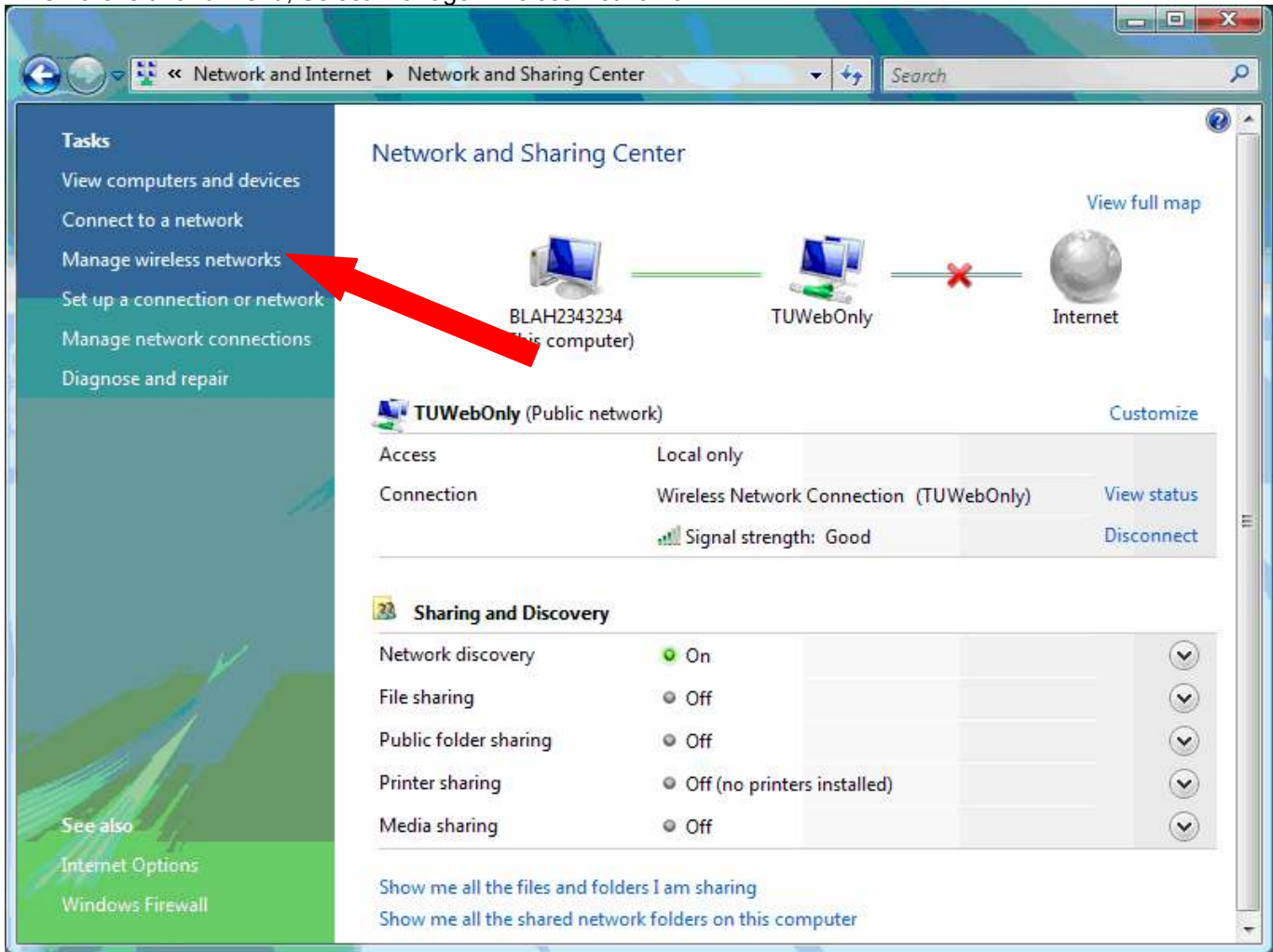
2. Select 'Network and Internet'



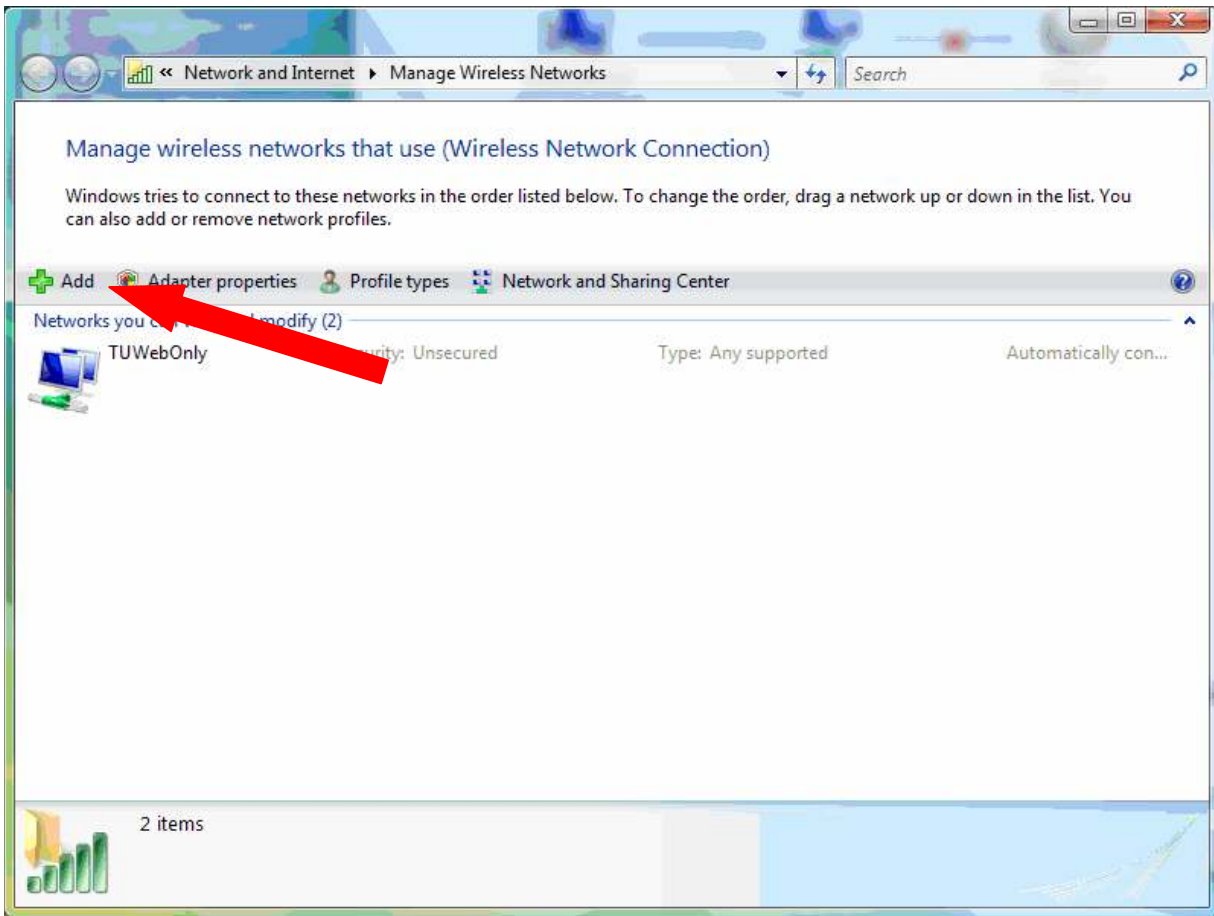
3. Select 'Network and Sharing Center'



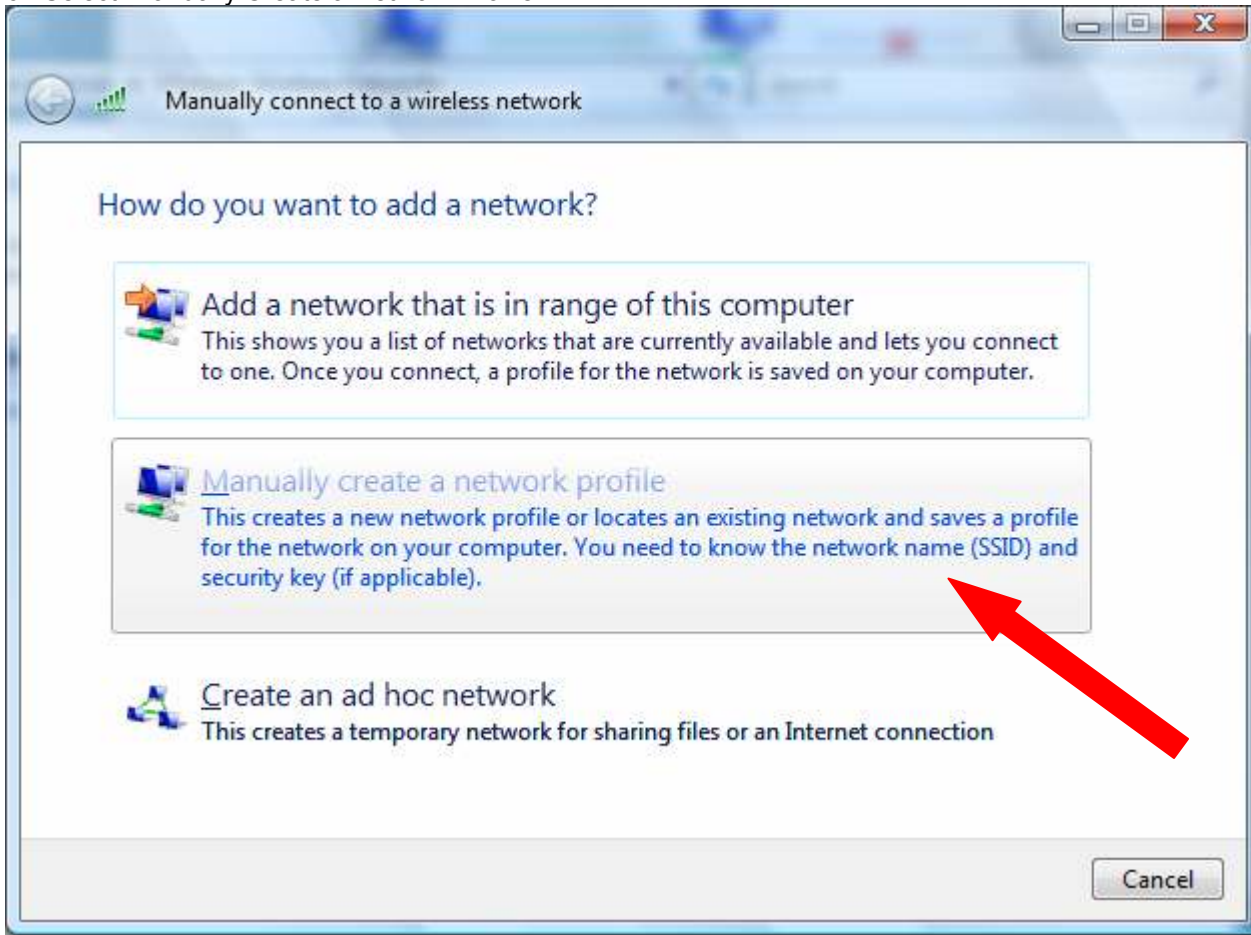
4. On the left hand menu, Select 'Manage Wireless Networks'



5. Click of 'Add'



6. Select 'Manually Create a Network Profile'



7. Input the following information:
Network name: TUSecure
Security Type: WPA2-Enterprise
Encryption: AES

Click Next

Manually connect to a wireless network

Enter information for the wireless network you want to add

Network name:

Security type:

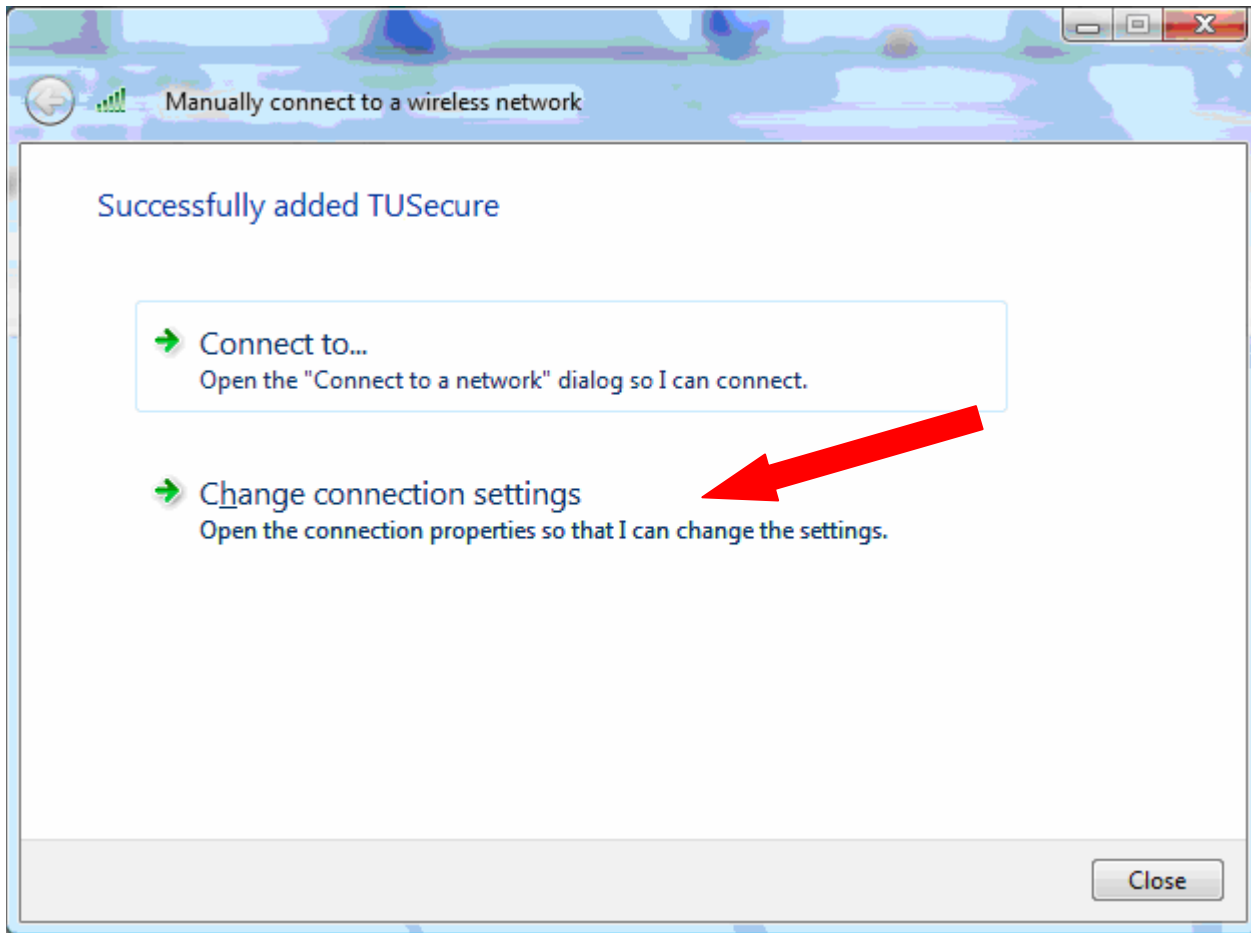
Encryption type:

Security Key/Passphrase: Display characters

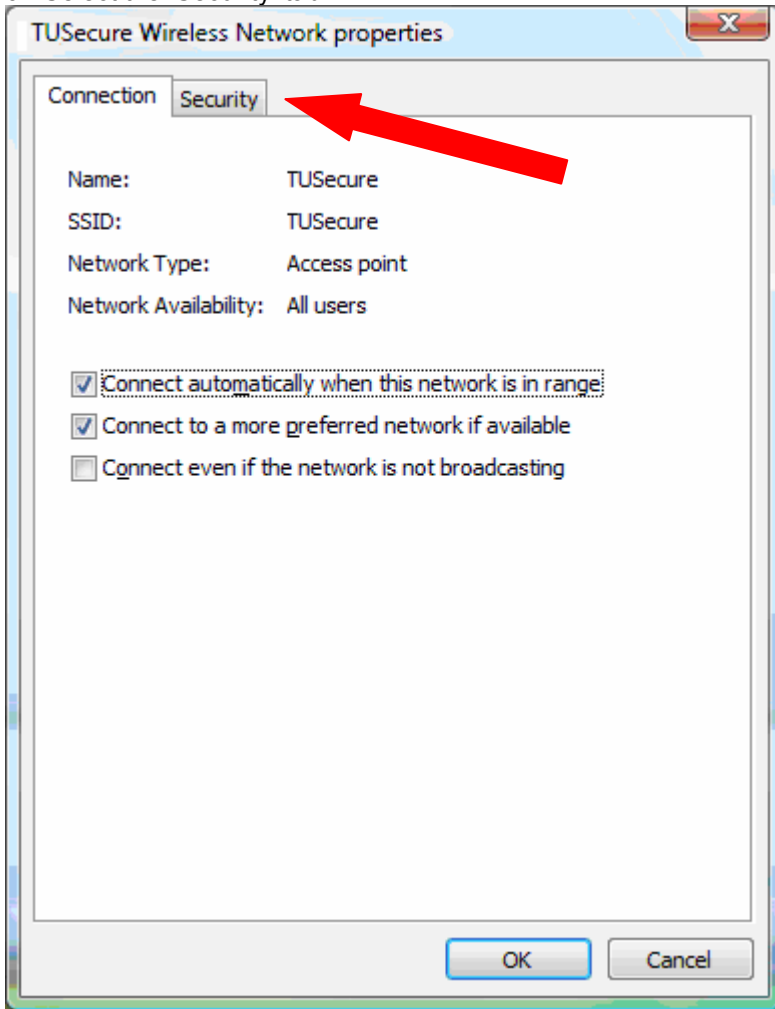
Start this connection automatically

Connect even if the network is not broadcasting
Warning: If you select this option, your computer's privacy might be at risk.

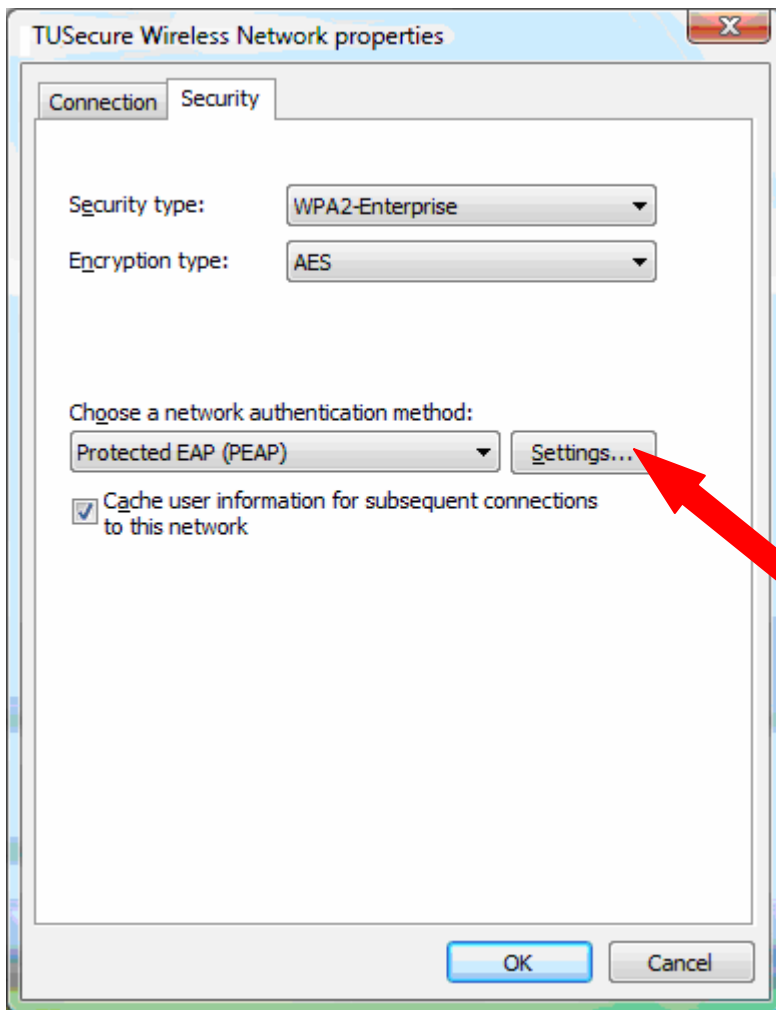
8. Select 'Change Connection Settings'



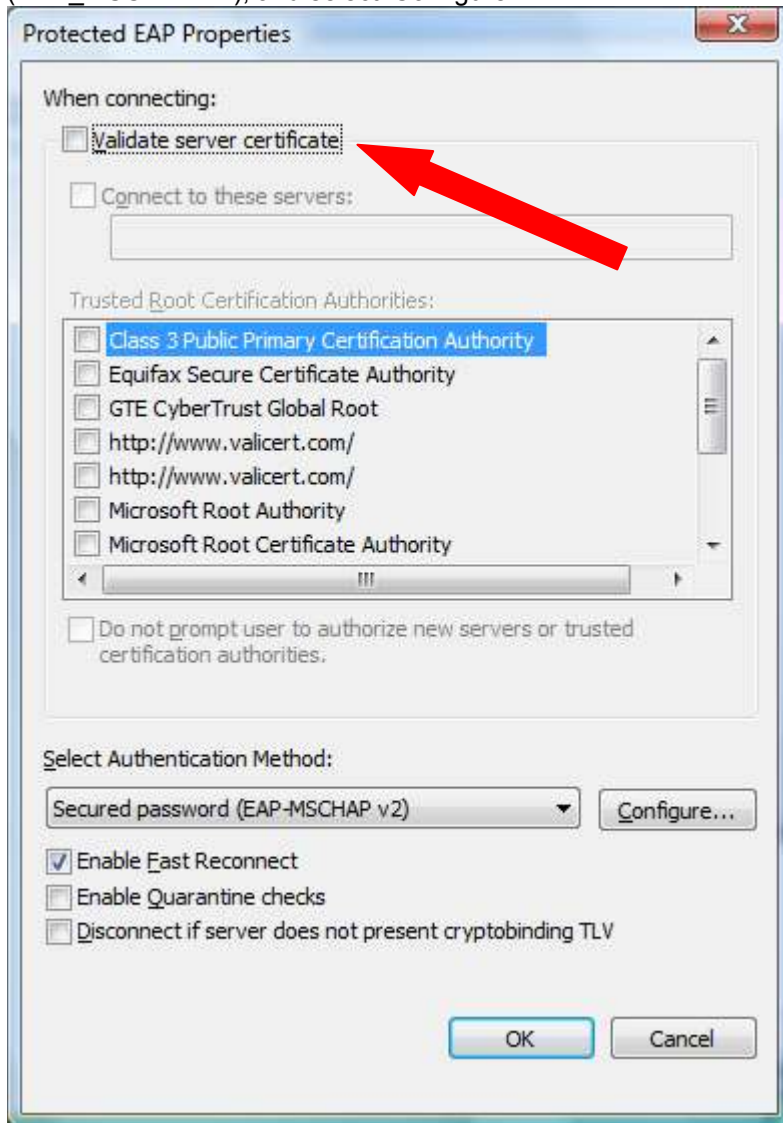
9. Select the 'Security' tab



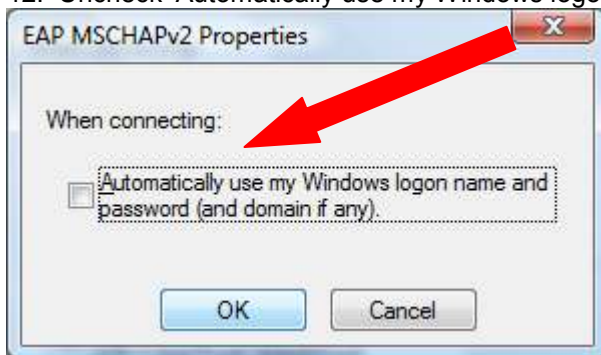
10. Choose a network authentication method: Protected EAP (PEAP), then select 'Settings'.



11. Uncheck the 'Validate Server certificate', and ensure that the 'Select Authentication Method' is 'Secured password (EAP_MSCHAP v2)', and select 'Configure'.

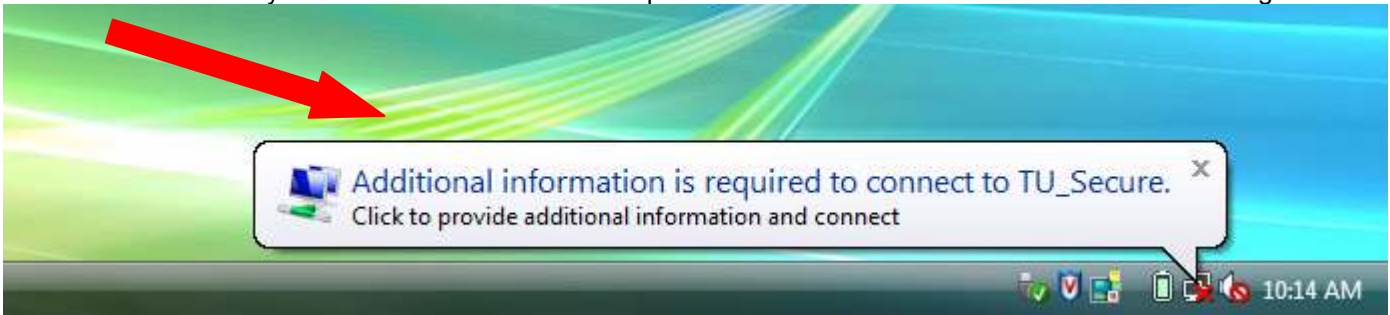


12. Uncheck 'Automatically use my Windows logon name and password'.



13. Click OK through all the boxes, until you get to your desktop.

14. If you are in range of the wireless network, once you are connected, a message will appear at the bottom of your screen. It will tell you 'Additional Information is required to connect to TU_Secure'. Click on this message.



15. Enter your utulsa username and password, and click 'OK'



16. Once you are connected and authenticated to TUSecure, you will need to open a internet browser, and authenticate a second time to the network registration system. Again, input your utulsa username and password, and click login.

