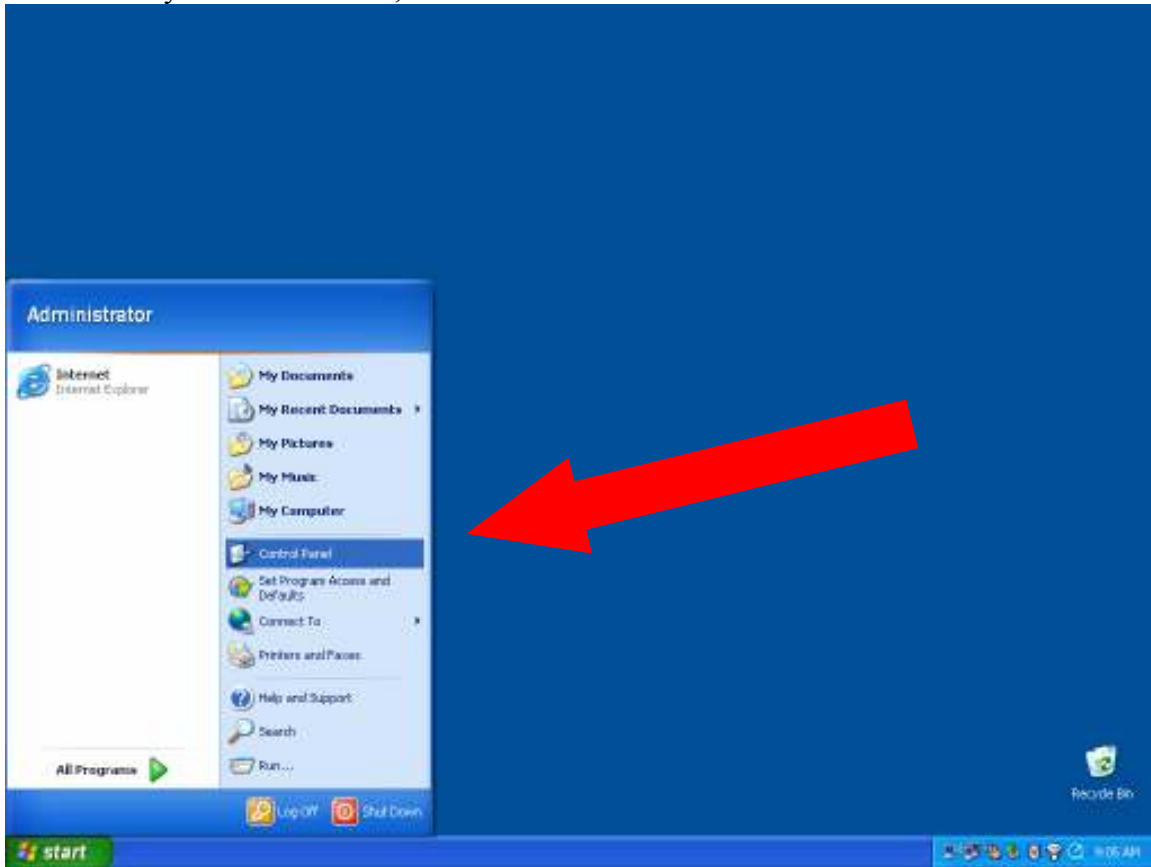


Information Services

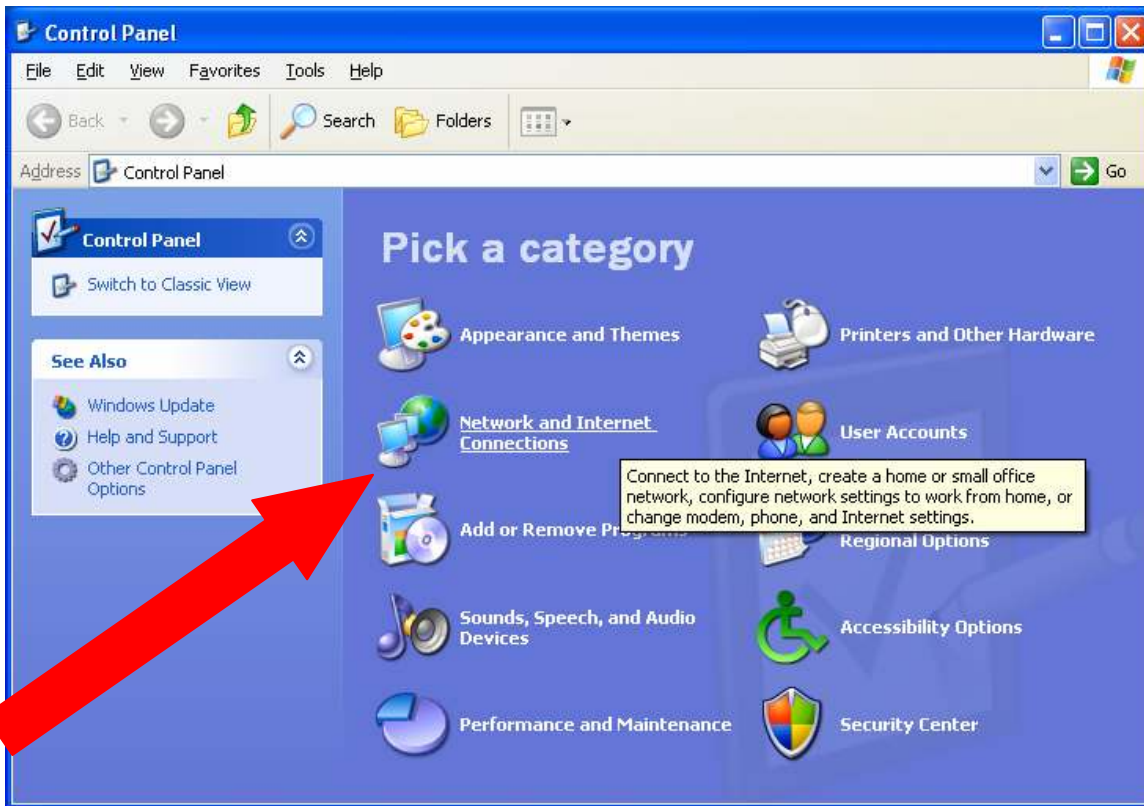
TUSecure
Wireless Setup Guide

For Windows XP

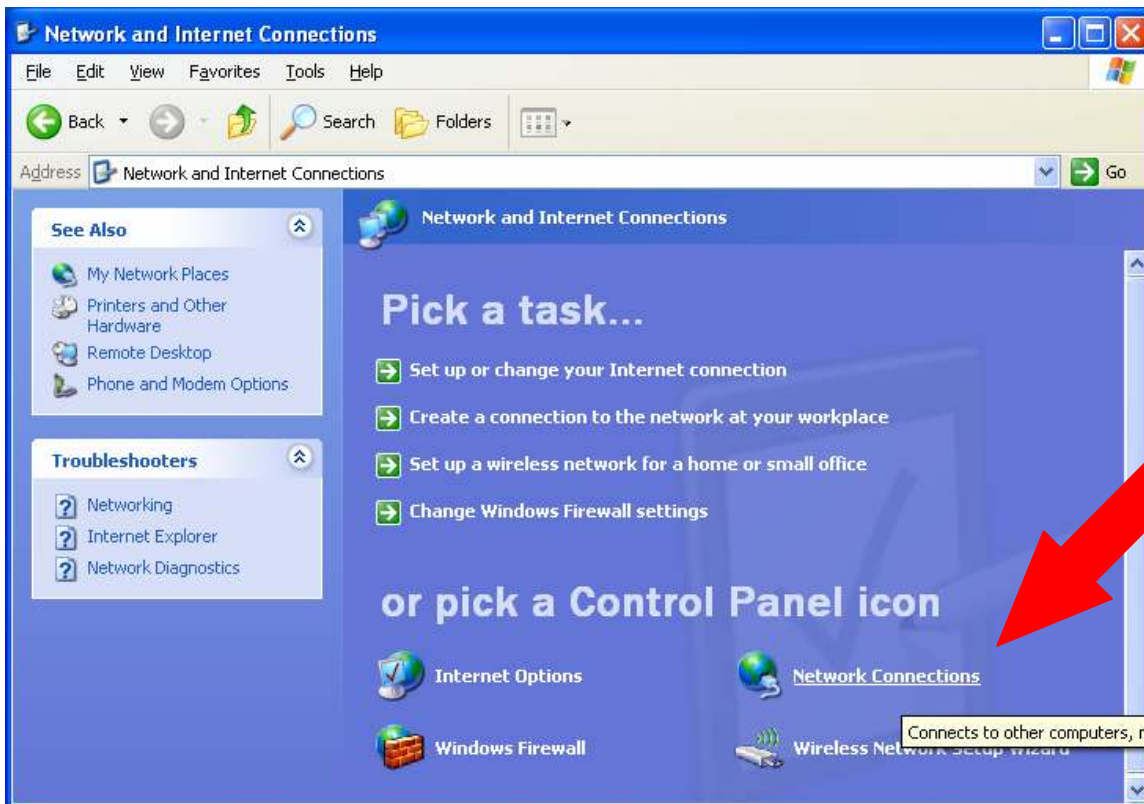
1. Click on your 'Start' Menu, and select 'Control Panel'



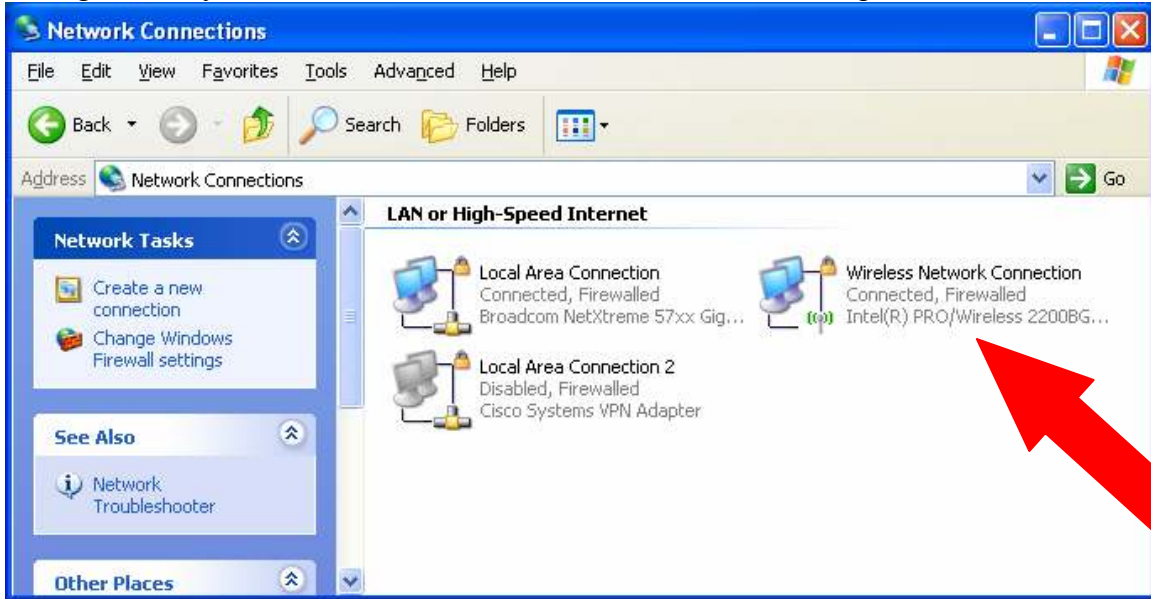
2. Select 'Network and Internet Connections'



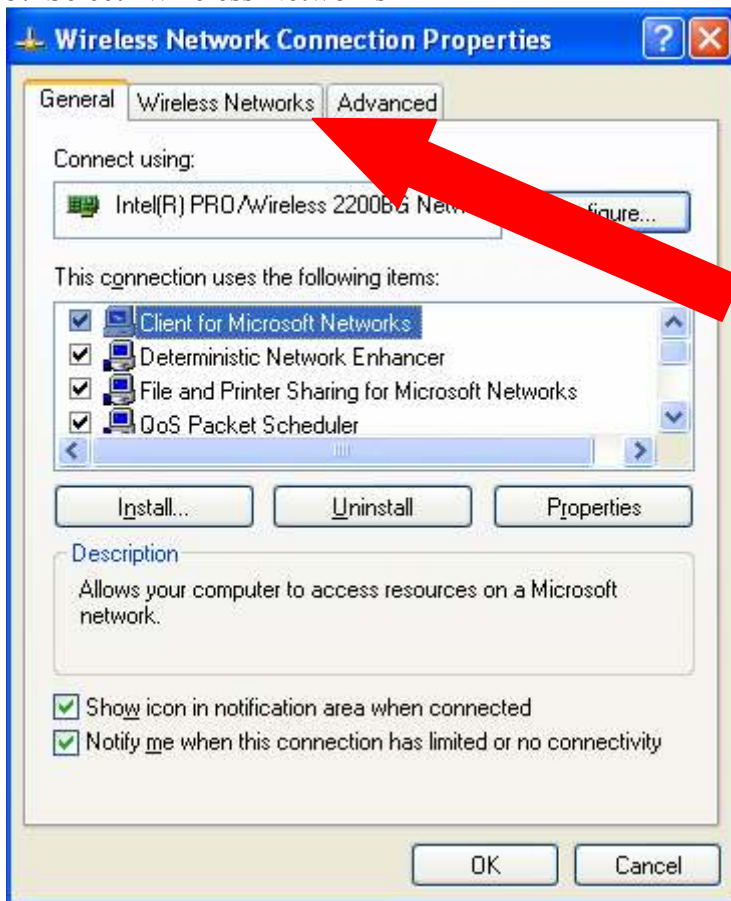
3. Select 'Network Connections'



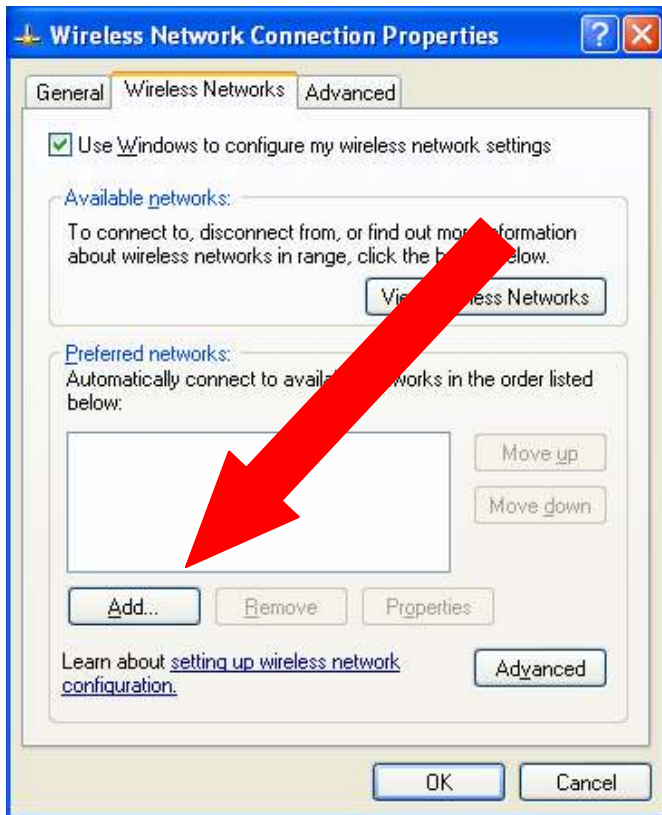
4. Right Click your 'Wireless Network Connection' & Select 'Properties'



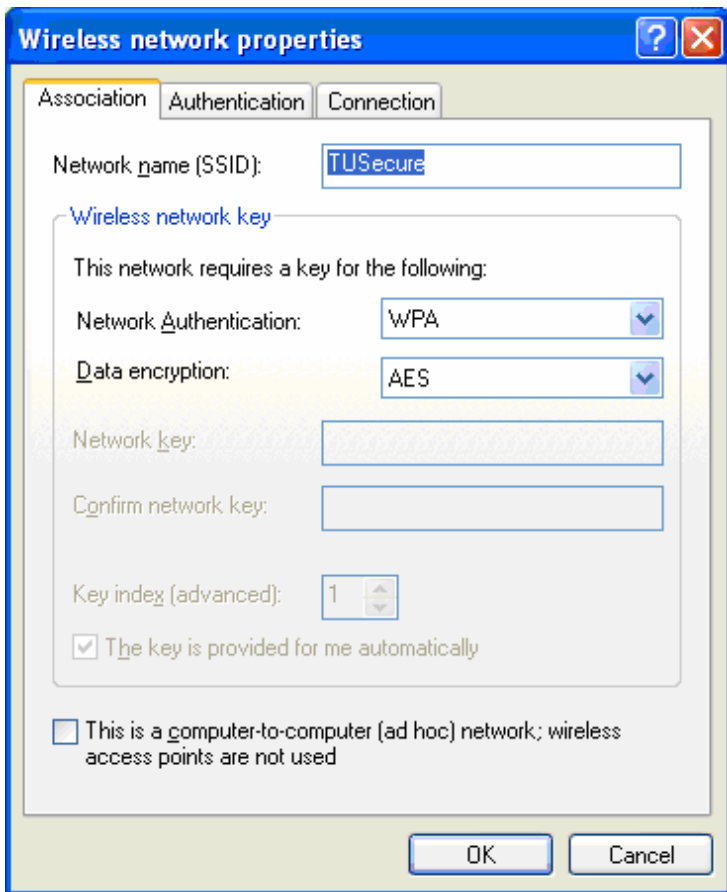
5. Select 'Wireless Networks'



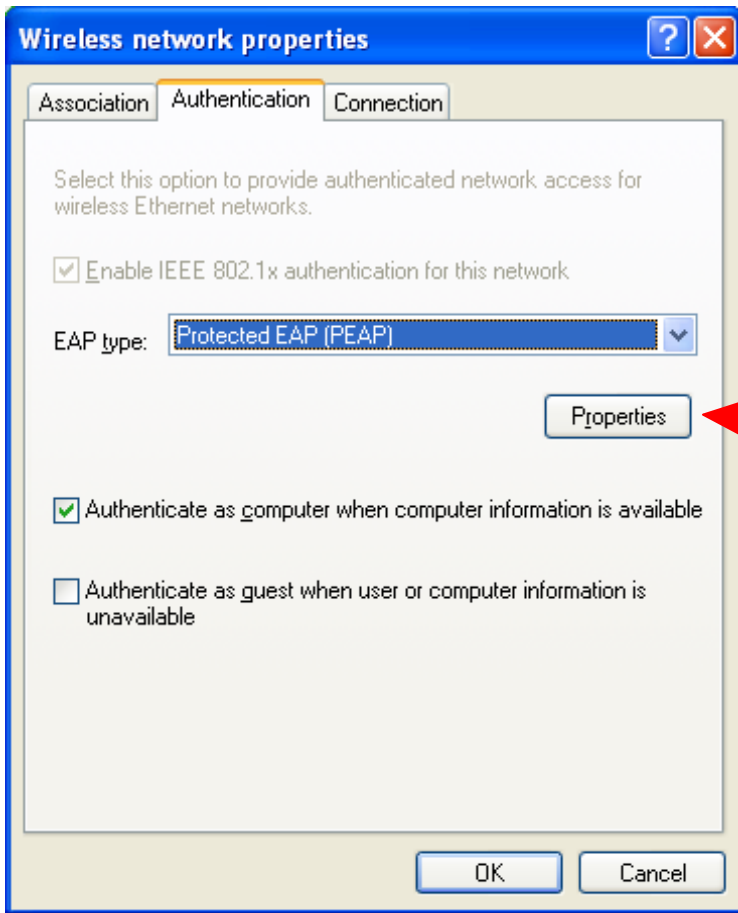
6. Select 'Add'



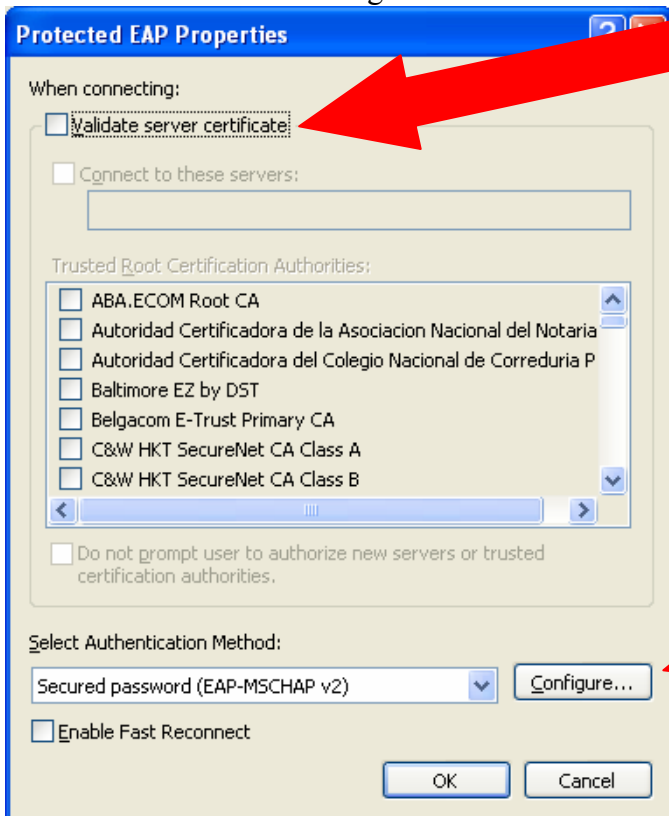
7. Input the following Information:
- Network Name (SSID): TUSecure
 - Network Authentication: WPA
 - Data Encryption: AES



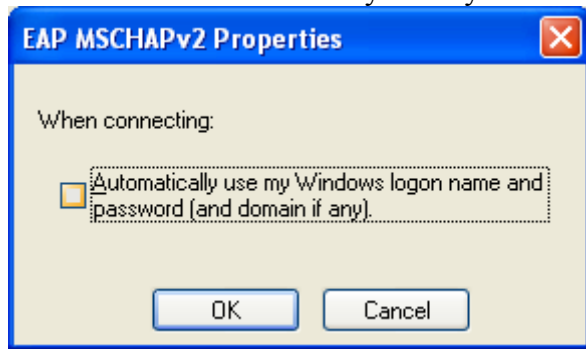
8. Select the 'Authentication' tab at the top:
 - a. EAP type: Protected EAP (PEAP)
 - b. Select 'Properties'



9. Uncheck 'Validate Server Certificate'
 - a. Authentication Method: Secure password (EAP-MSCHAP v2)
 - b. Select 'Configure'

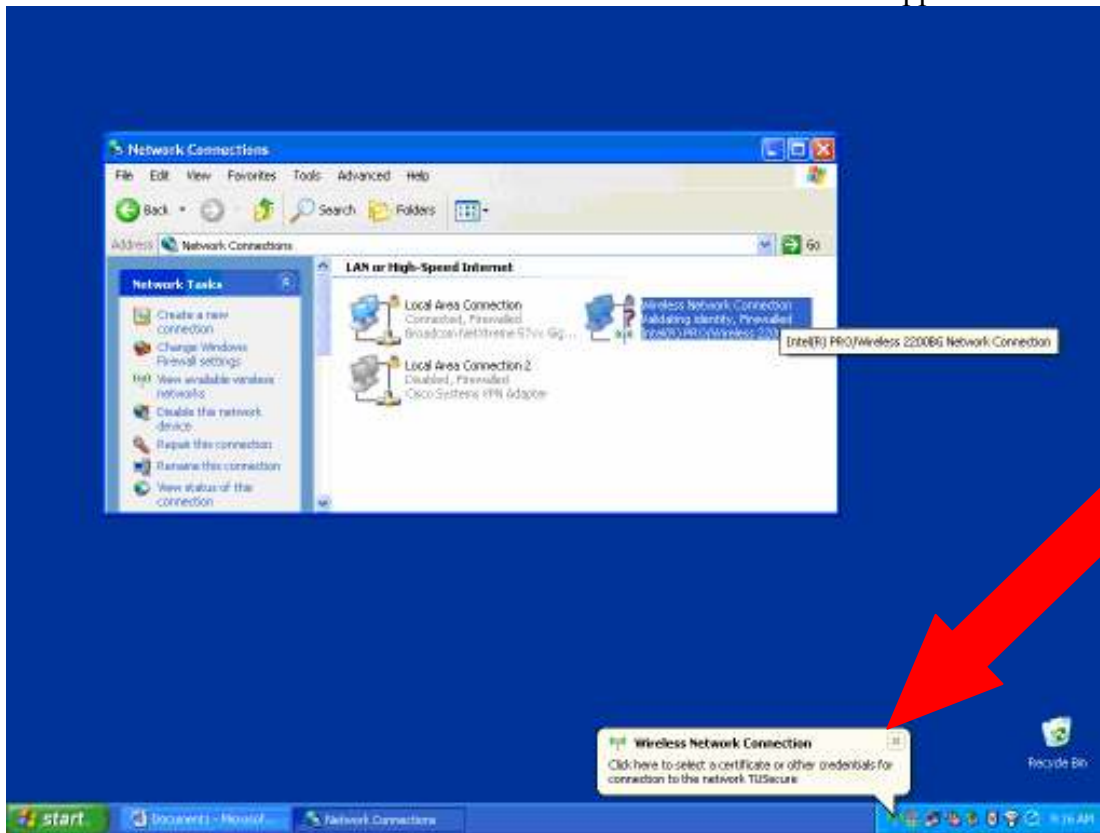


10. Uncheck 'Automatically use my Windows Logon name and password.'



11. Click 'OK' on all windows to get back down to desktop

12. Click on the 'Wireless Network Connection' bubble that should appear.



13. Input your utulsa username & password

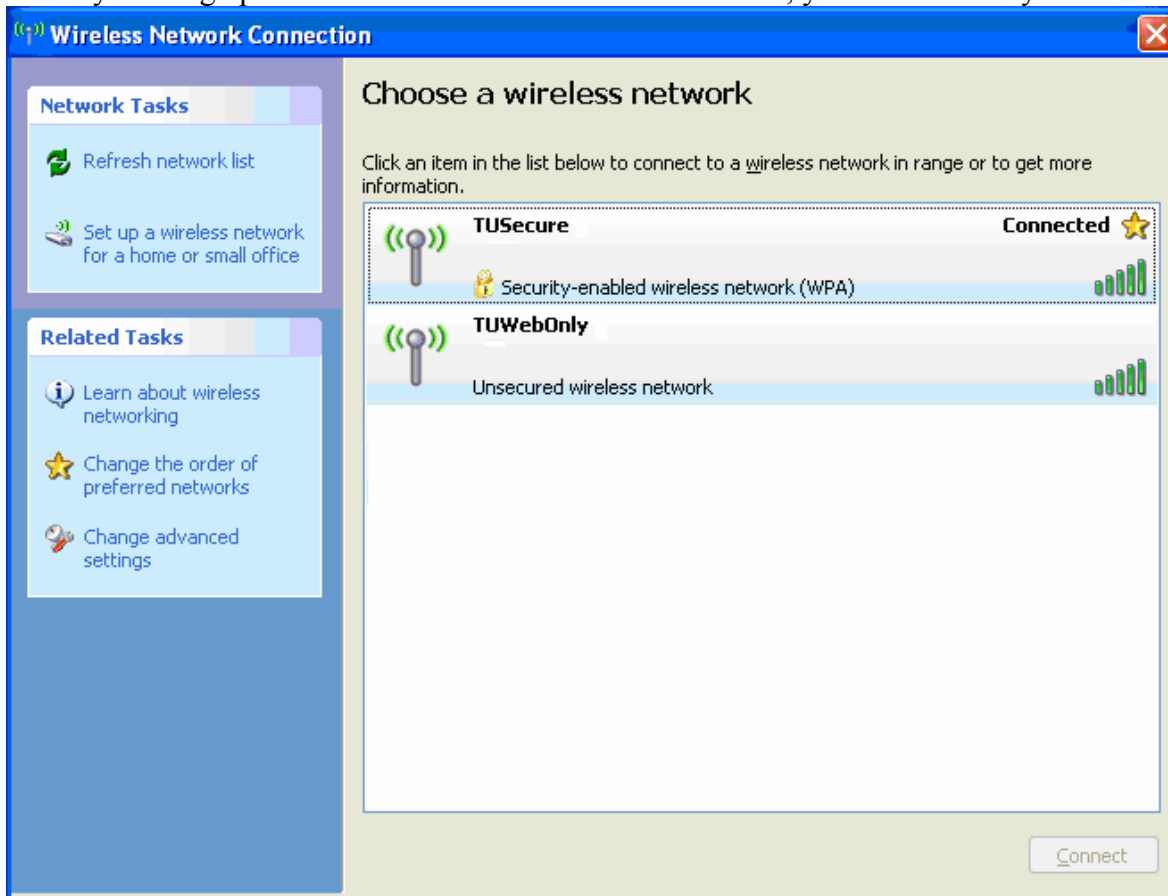




14. Once your connected to the network, and authenticated, a message should appear at the bottom verifying the connection.



15. If you bring up the 'View Available Wireless Networks', you will see that you are Connected to TUSecure



15. Once you are connected and authenticated, open a browser, and you will be asked to authenticate a second time to the network registration system.

