

**TUSecure**

# **Wireless Setup Guide**

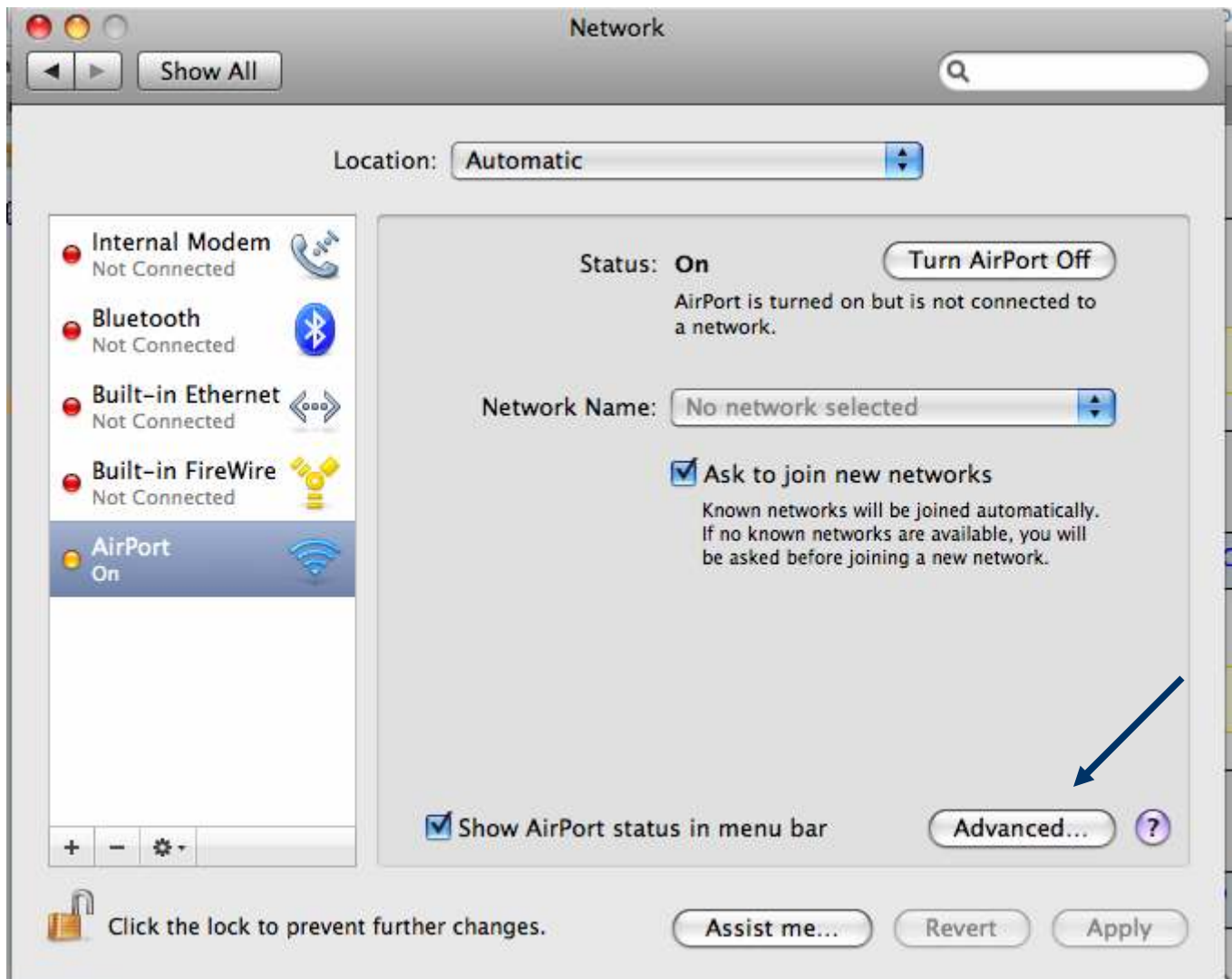
**For Mac OS X 10.5**

**The University of Tulsa**

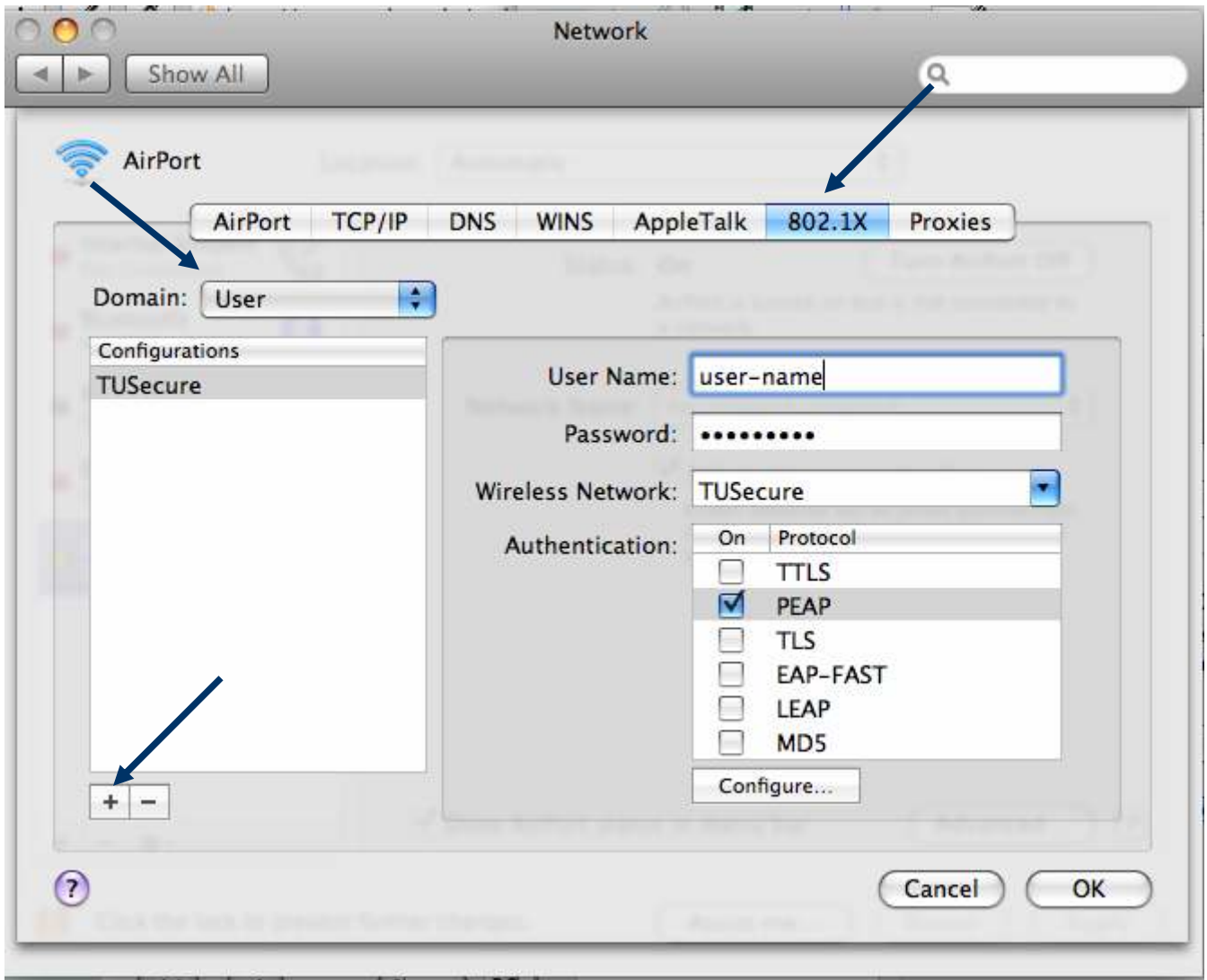
## Connecting to TU Secure from OS X 10.5

1. Open **System Preferences** from the Apple Menu.
2. Click on **Network**.
3. Select **Airport**.

Click on the button labeled “**Advanced**.”

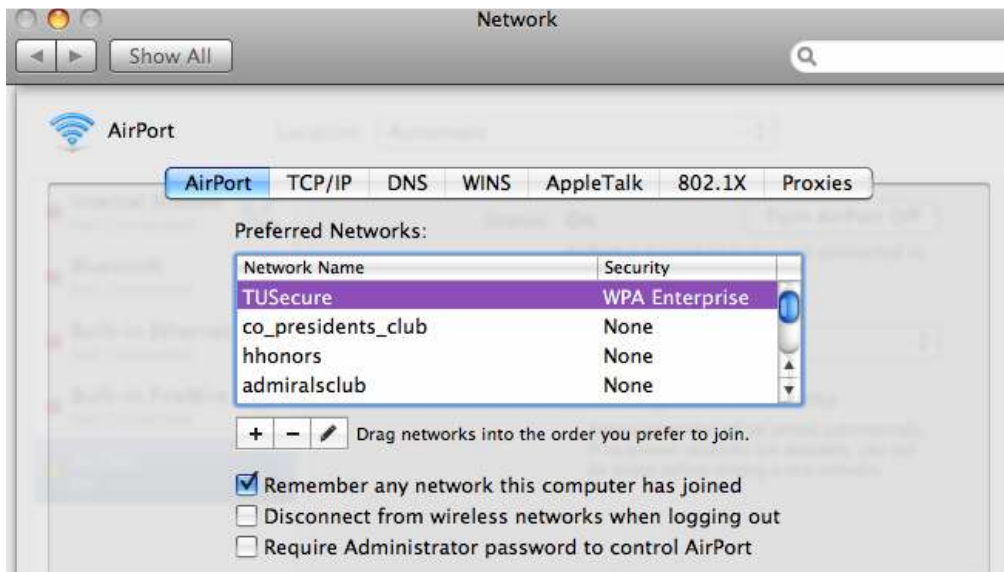


4. Across the top of the Advanced pane, click on the tab labeled “**802.1X**.”
  - a) Change the **Domain** to “**User**,” and then click the **plus sign** at the bottom of the Configurations section.
  - b) You can name your new configuration “**TU Secure**” and then fill out the section to the right.
  - c) Enter your username and password.
  - d) Enter “**TU Secure**” for the Wireless Network.
  - e) In the Authentication section, uncheck everything except “**PEAP**.”



5. Click on the “AirPort” tab at the top of the current pane.

6. If “TUSecure” is already in the list of wireless networks, click the pencil icon to edit the settings for it. If it’s not, click the **plus sign** to add it.

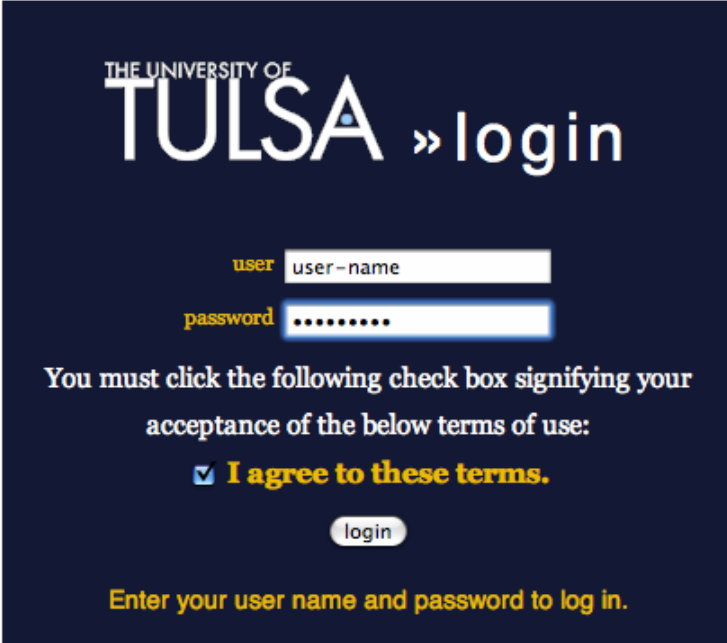


7. Make sure your settings match those below; Security should be set to “**WPA Enterprise**” and **802.1X** should be set to “**TUSecure**” (or whatever else you named your configuration from the 802.1X pane). Click Add.



8. When you return to the general Network preference pane, you should automatically connect to “TUSecure”. It may temporarily say “Self-Assigned IP Address,” but within about thirty seconds, your computer will authenticate itself, and the status will change to “Connected!”
9. You are now connected to the WPA enabled, TU Secure Network.
10. Open Safari or Firefox and you should be prompted with below page.

## Welcome to the University of Tulsa Network



THE UNIVERSITY OF  
**TULSA** » login

user

password

You must click the following check box signifying your acceptance of the below terms of use:

**I agree to these terms.**

Enter your user name and password to log in.