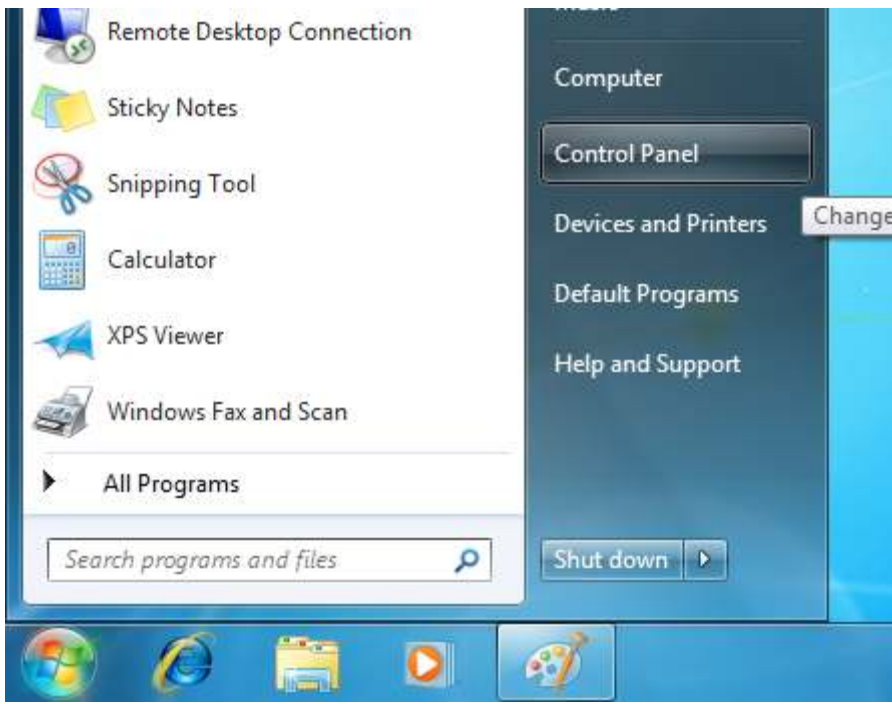


# Setup Guide

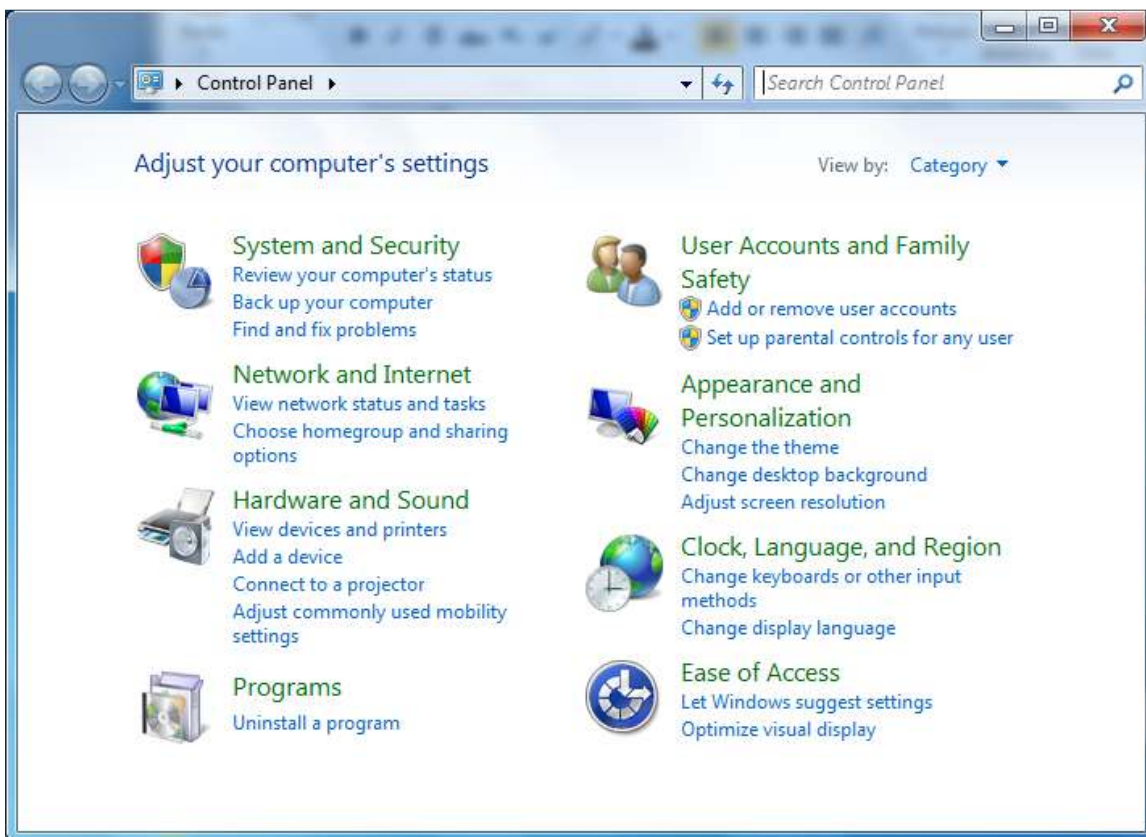
## TUSecure Wireless

Setup Example:

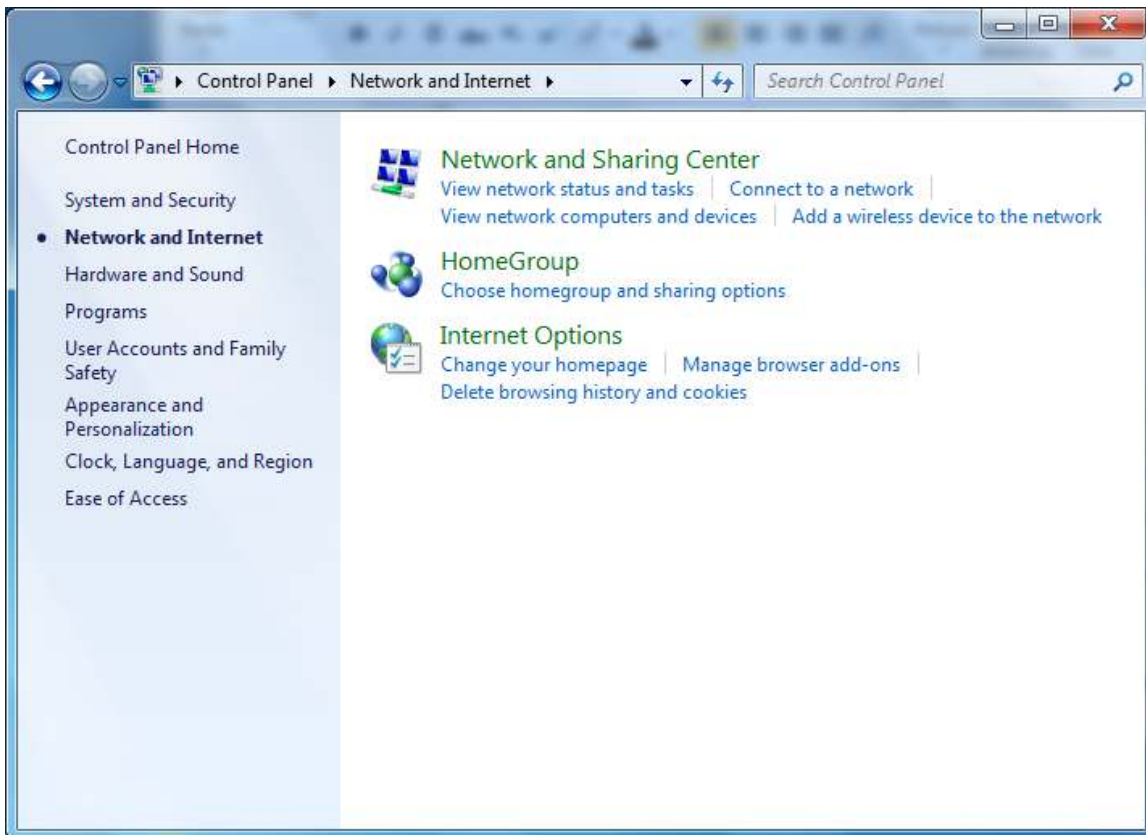
Windows 7



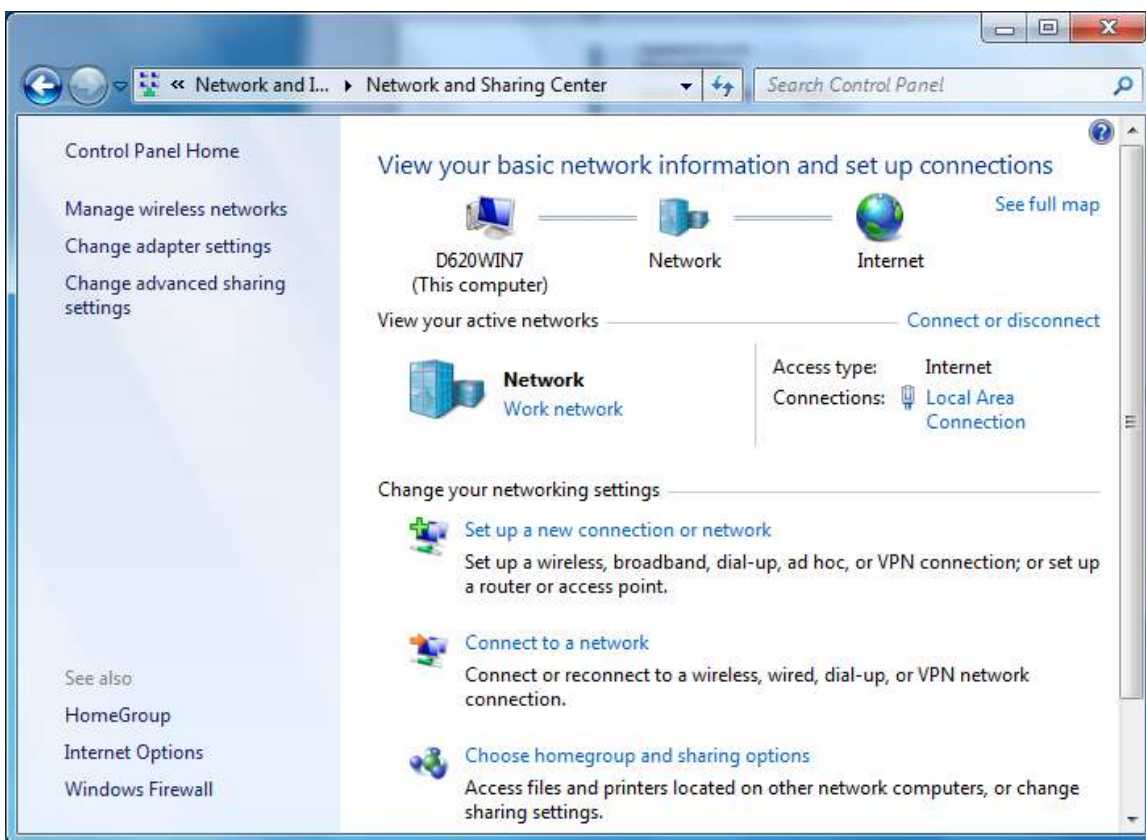
1. Open your Control Panel



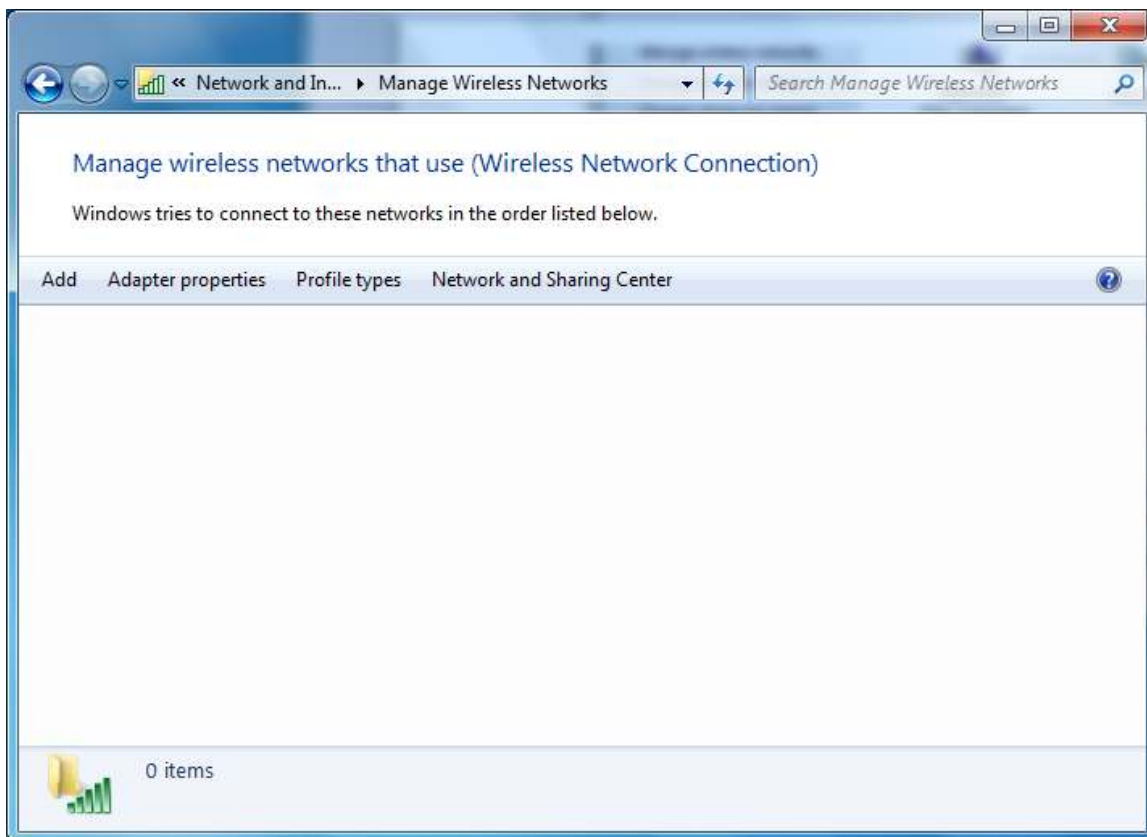
2. Select 'Network and Internet'.



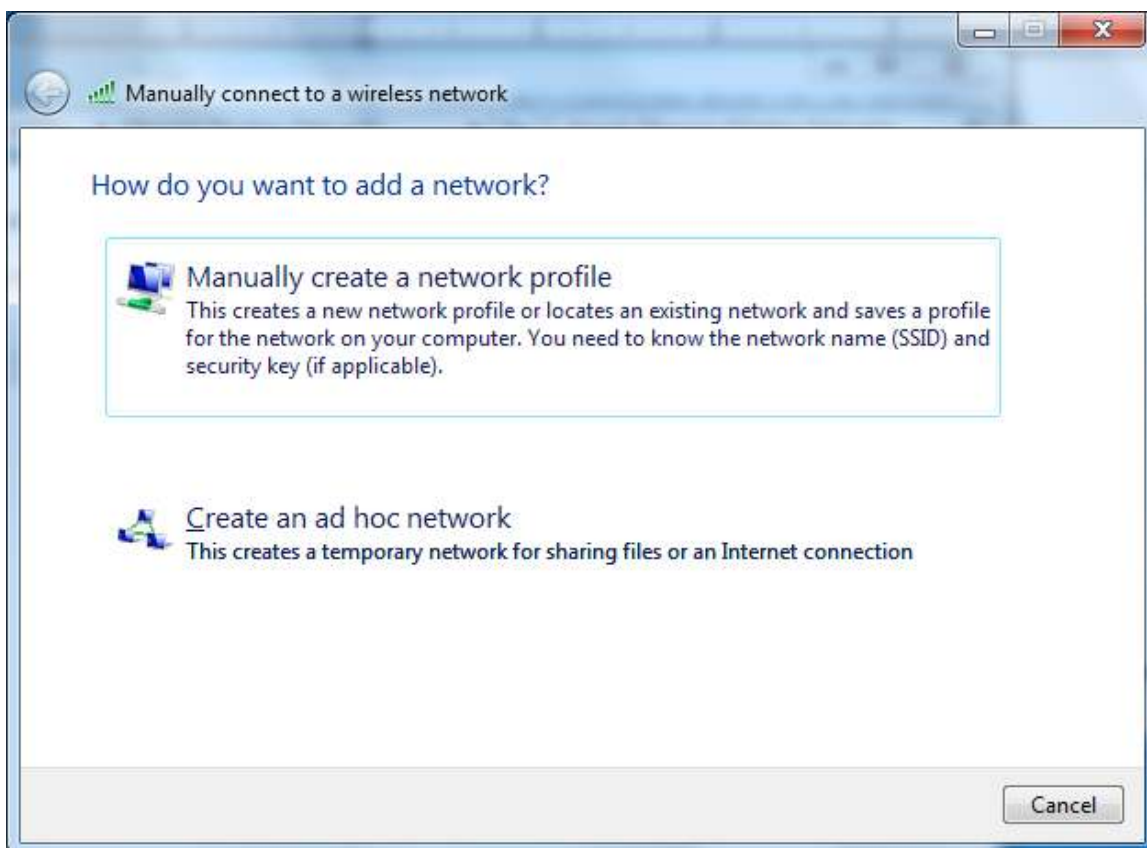
3. Select 'Network and Sharing Center'



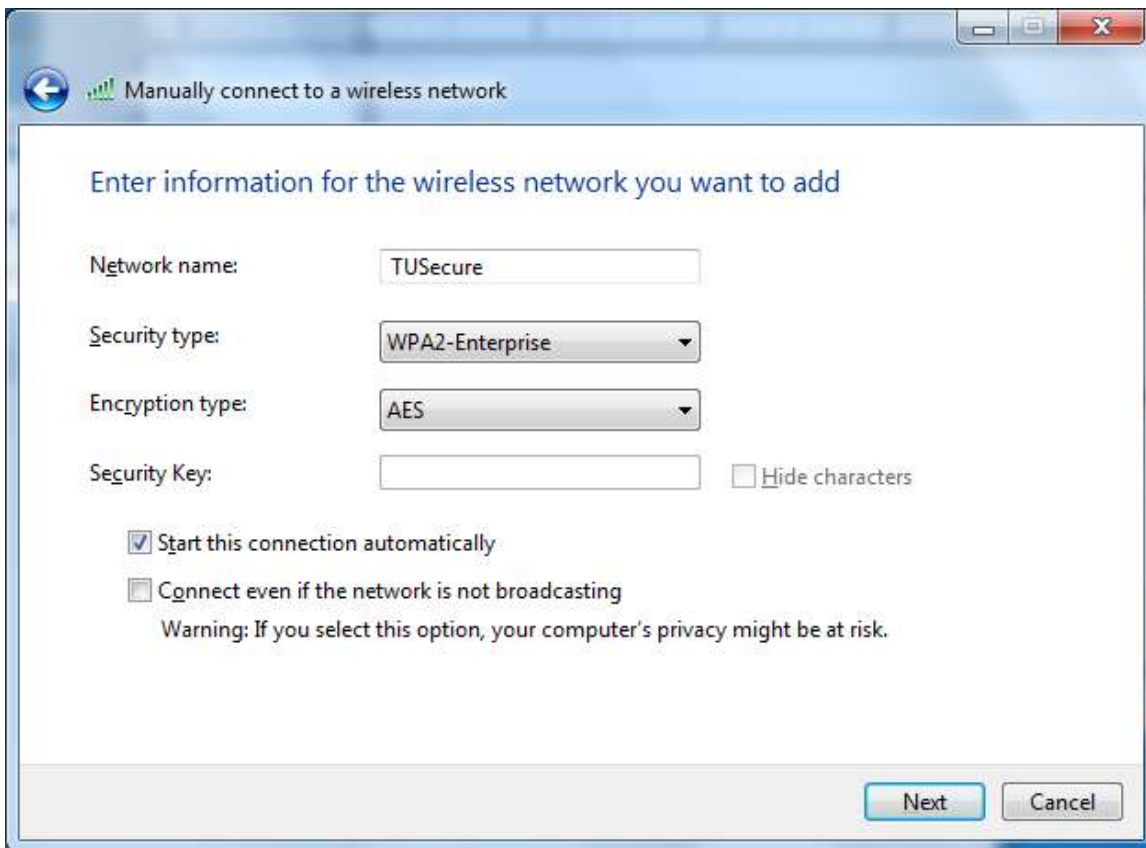
4. Select 'Manage Wireless Networks'



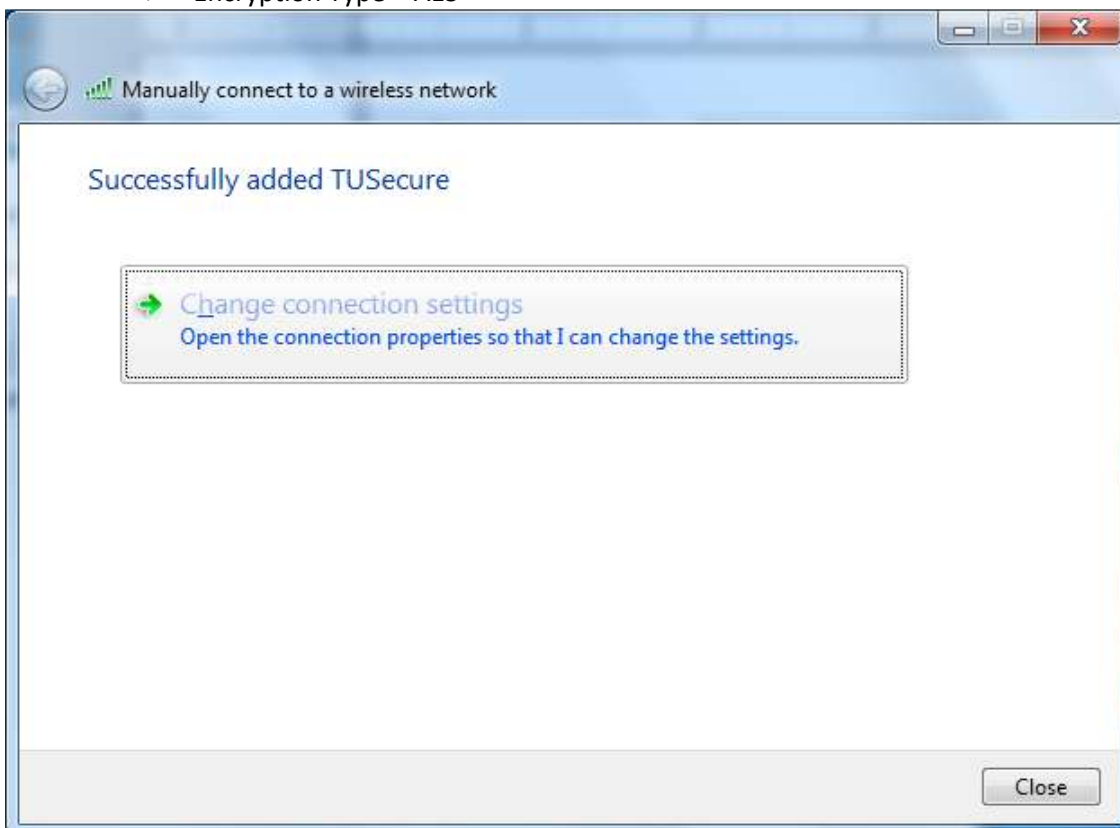
5. Select 'Add'



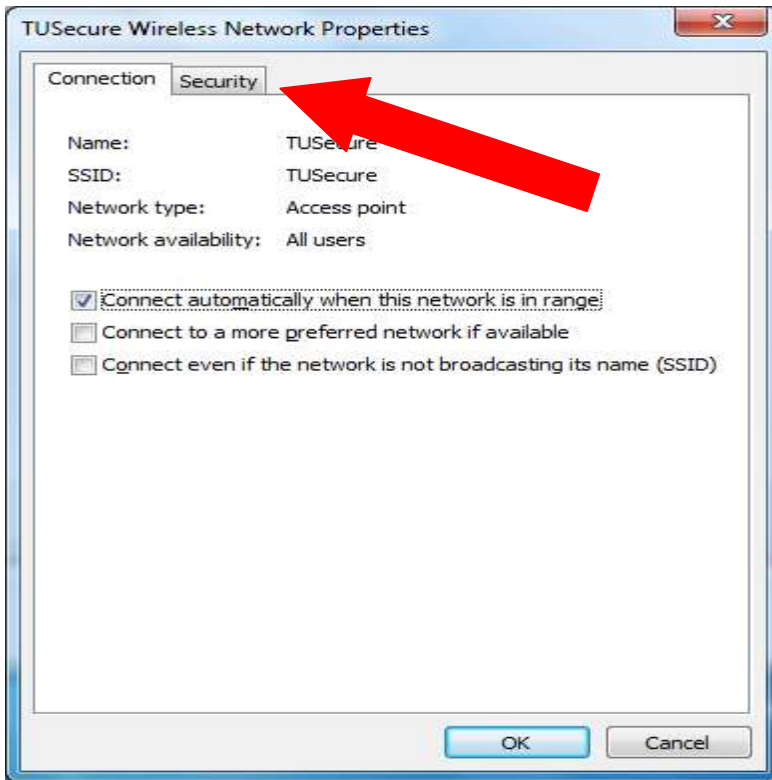
6. Select 'Manually Create a network profile'.



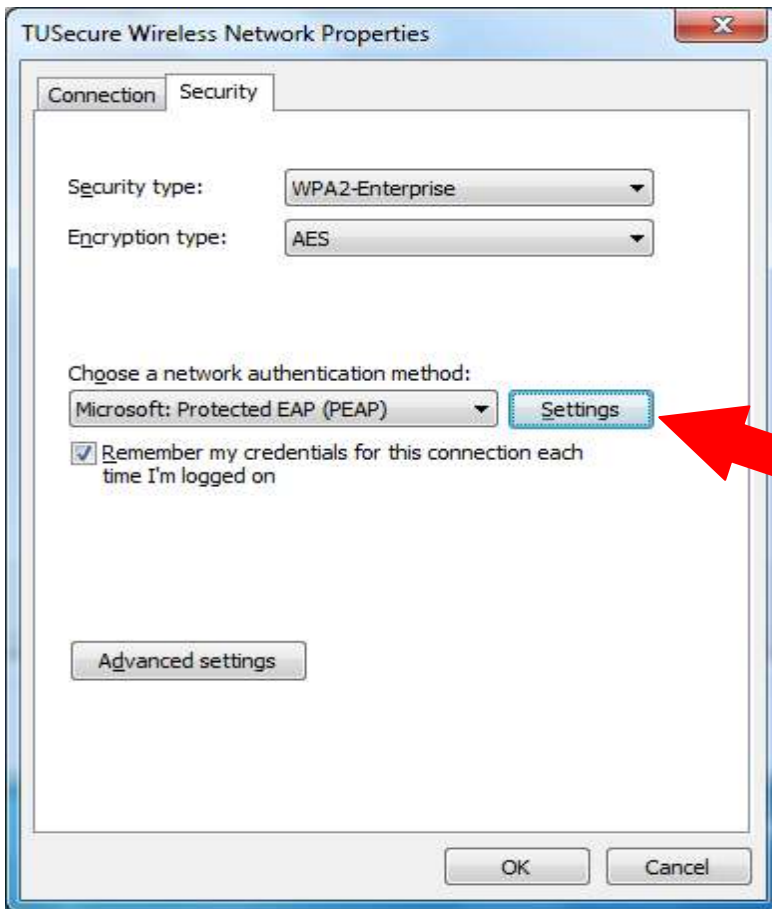
7. Use the following Information, then Select 'Next'
  - Network Name = TUSecure,
  - security Type = WPA2 -Enterprise,
  - Encryption Type = AES



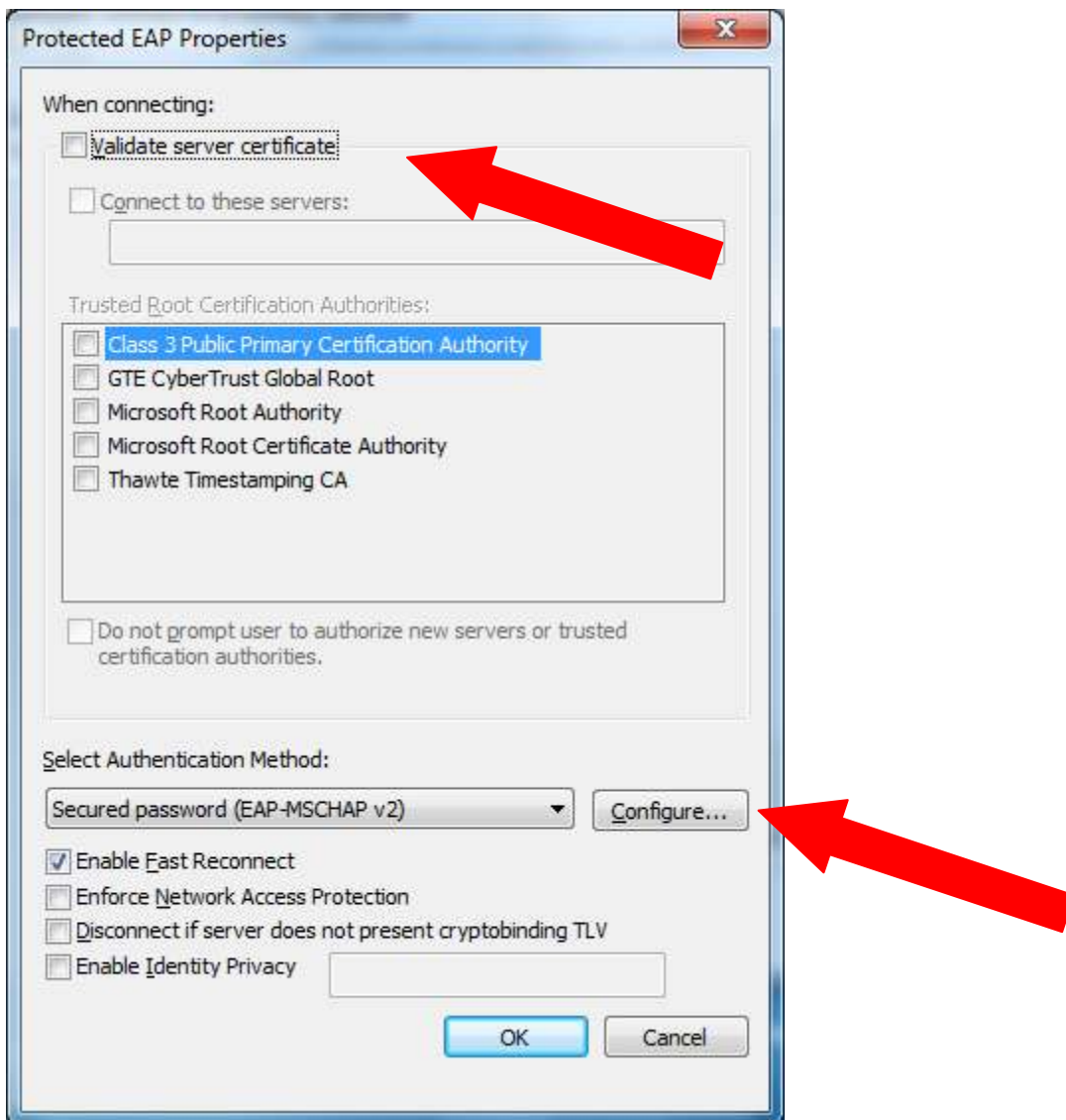
8. Select 'Change Connection Settings'



9. Select the 'Security' Tab



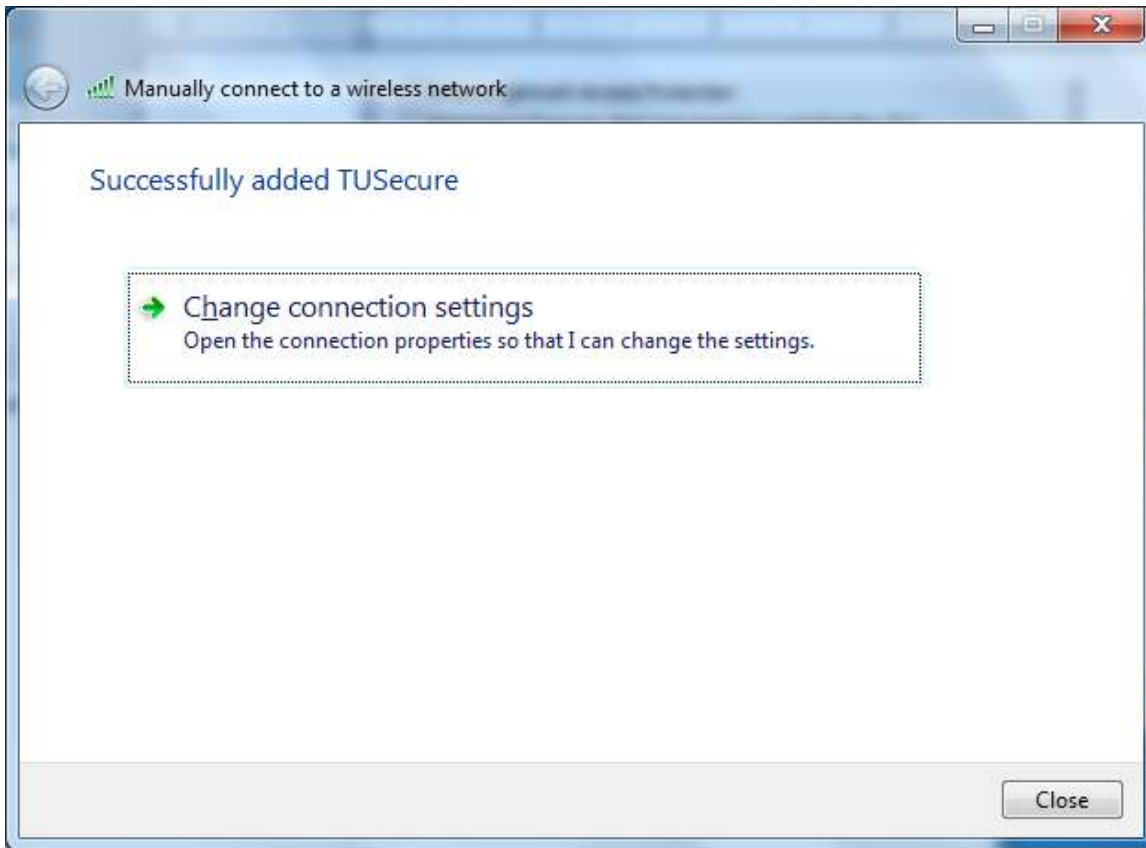
10. Select 'Microsoft: Protected EAP (PEAP)', then Select 'Settings'



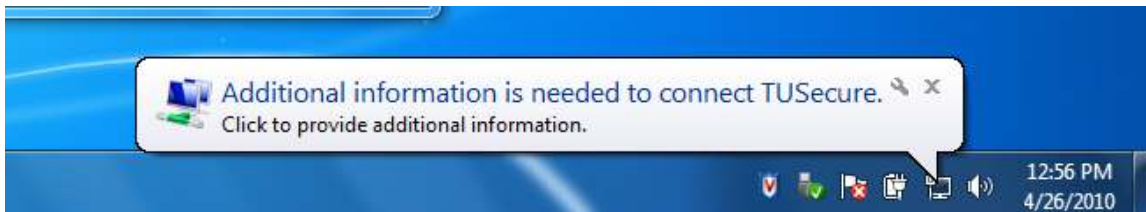
11. UnSelect 'Validate Server Certificate', then Select 'Configure'



12. UnSelect 'Automatically use my Windows logon name and password', then Select 'OK'



13. Select 'Close'



14. Click on the PopUp box at the bottom of your screen



15. Use your utulsa username and password.



16. Once Authenticated, you should see that you are connected to the TUSecure wireless network. Enjoy browsing the internet. Don't download anything illegal!